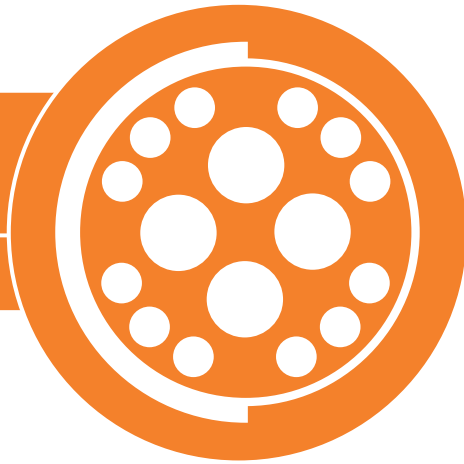


B10

CHAPTER

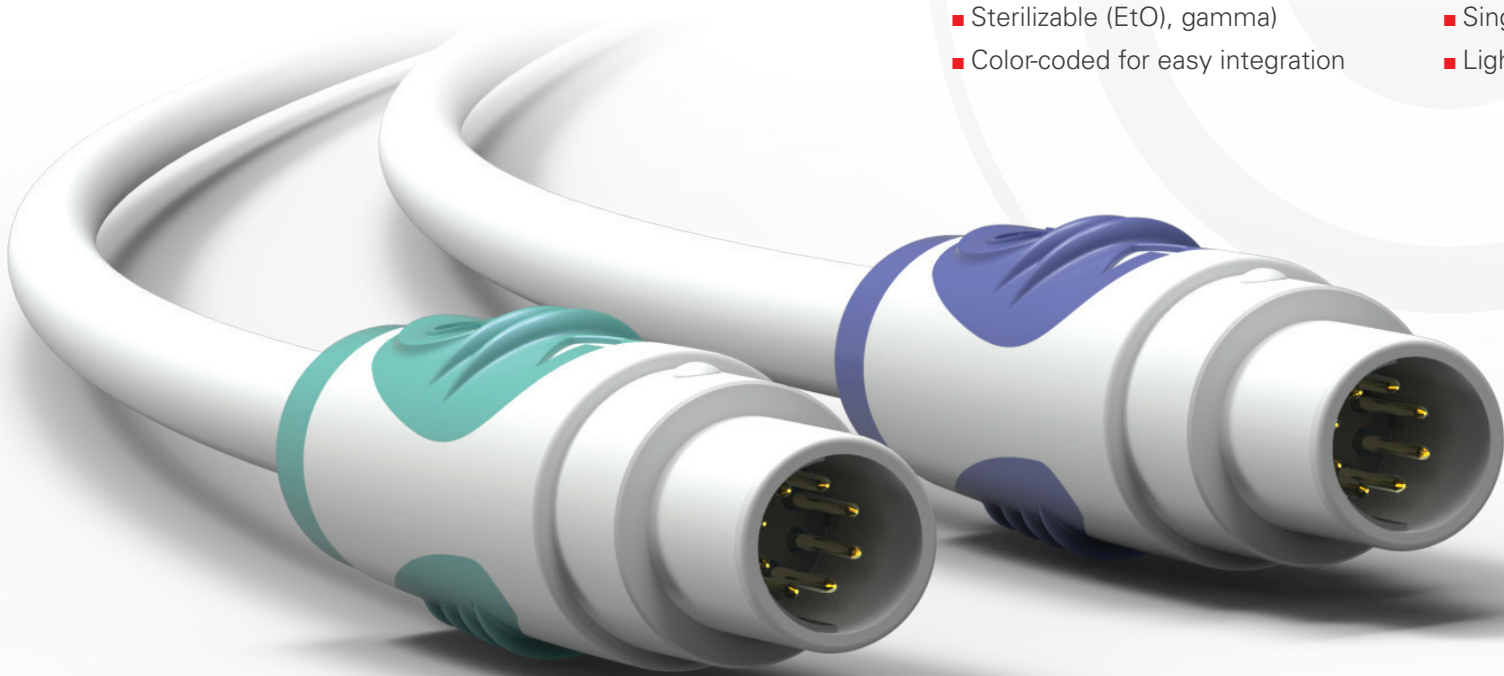


FISCHER CORE SERIES **DISPOSABLE**

COST-EFFECTIVE | EASY TO USE | MODULAR

KEY FEATURES

- Sterilizable (EtO), gamma
- Single or two-piece shell
- Color-coded for easy integration
- Lightweight and shock resistant



DISPOSABLE



PLUGS



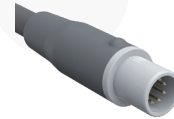
CABLE MOUNTED TWO-PIECE SHELL

- Body styles..... B 10-3
- Technical dimensions B 10-4



CABLE MOUNTED SINGLE SHELL

- Body styles..... B 10-3
- Technical dimensions B 10-5



PRE-CABLED SOLUTION

- Body styles..... B 10-3
- Technical dimensions B 10-5

FOR ALL DISPOSABLE

- Electrical & contact configurations..... B 10-6
- Technical information..... B 10-8
- Product specifications A-5

This catalog covers our standard connector solutions. For specific requests, including hybrid or custom connectors, please contact your local sales representative.

PLUGS

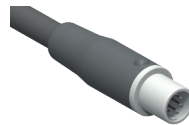
CABLE MOUNTED



BODY STYLES

| | WHITE | BLUE | VIOLET | TURQUOISE |
|----------------|------------------------|-----------------|-----------------|------------------|
| Locking system | Friction | Friction | Friction | Friction |
| Sealing | IP30/IP40 | IP40 | IP40 | IP40 |
| Design | Single/Two-piece shell | Two-piece shell | Two-piece shell | Two-piece shell |

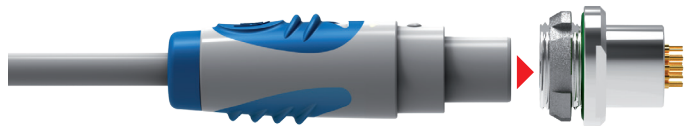
PRE-CABLED SOLUTION



BODY STYLES

| | |
|----------------|----------|
| Locking system | Friction |
| Sealing | IP65 |
| Design | Turnkey |

COMPATIBILITY



Mateable with all high performance Fischer Connectors' panel receptacles of the Fischer Core Series Brass 104.

PLUGS

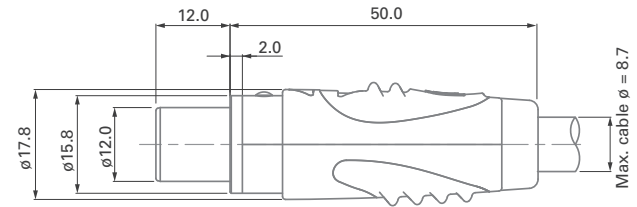
TWO-PIECE SHELL

WHITE*

BLUE

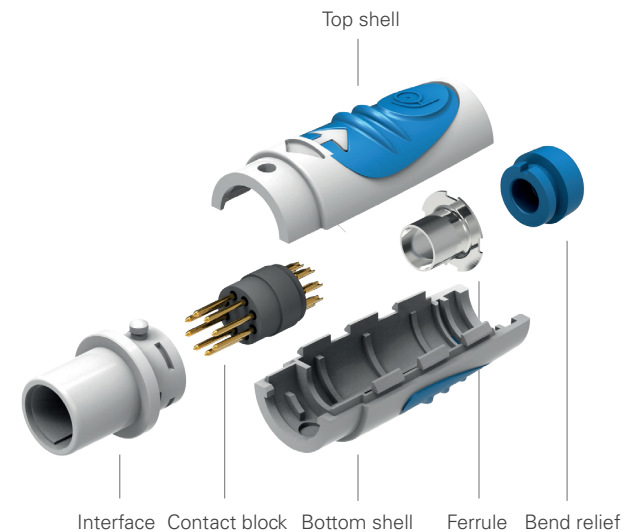
VIOLET

TURQUOISE



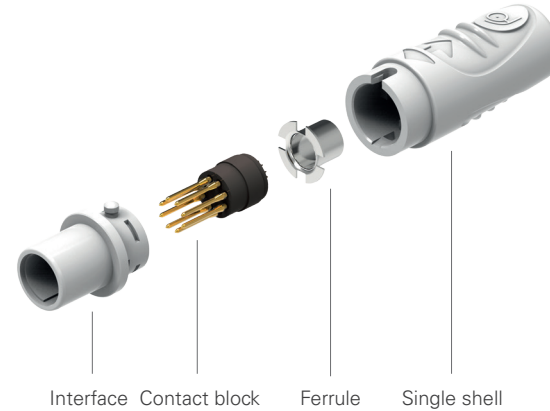
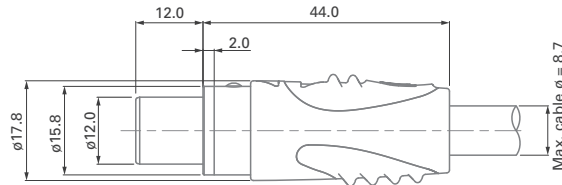
| Part | Part number | Description |
|---------------------|-------------|---|
| Interface | U1 504-A | Interface white |
| Top shell | U31 504-B01 | White top shell |
| | U31 504-A03 | White top shell + blue soft touch |
| | U31 504-A04 | White top shell + violet soft touch |
| | U31 504-A09 | White top shell + turquoise soft touch |
| Bottom shell | U32 504-B01 | White bottom shell |
| | U32 504-A03 | White bottom shell + blue soft touch |
| | U32 504-A04 | White bottom shell + violet soft touch |
| | U32 504-A09 | White bottom shell + turquoise soft touch |
| Ferrule | U33 504/5.0 | Ferrule Dia 5.0 for two-piece shell version |
| Bend relief | U34 504-A03 | Blue |
| | U34 504-A04 | Violet |
| | U34 504-A09 | Turquoise |

* Assembled with color bend relief.



PLUGS

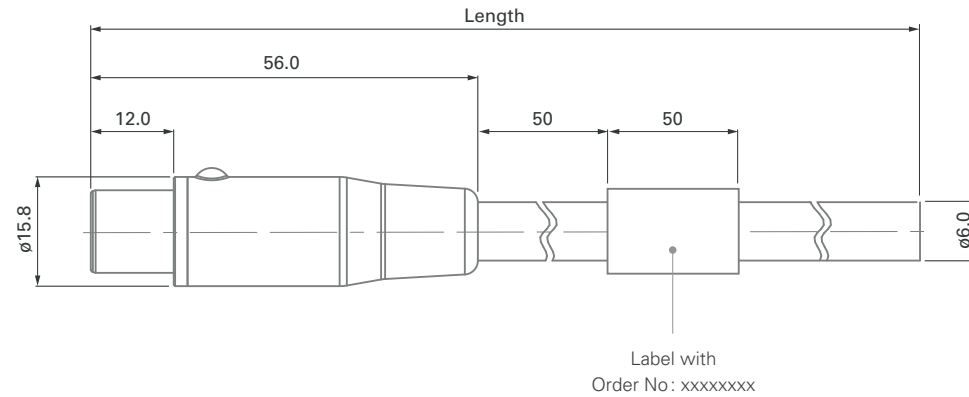
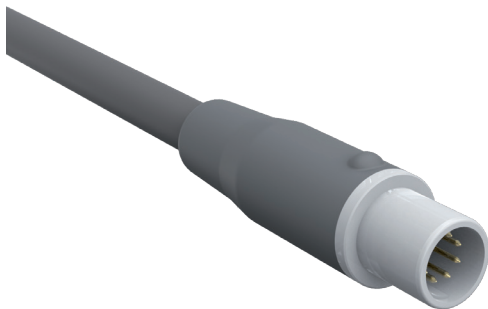
SINGLE SHELL
WHITE



| Part | Part number | Description |
|--------------|-------------|--|
| Interface | U1 504-A | Interface white |
| Single shell | U41 504-A | One-piece shell, white only |
| Ferrule | U42 504/5.0 | Ferrule Dia 5.0 for single shell version |

PLUGS







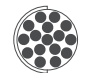

PRE-CABLED SOLUTION



| Part number | Length* [mm] |
|----------------------|--------------|
| CA_S_8XLV_SI504 1.0m | 1000 |
| CA_S_8XLV_SI504 2.0m | 2000 |
| CA_S_8XLV_SI504 5.0m | 5000 |


All dimensions and images shown are in millimeters and are for reference only.

SINGLE OR TWO-PIECE SHELL

| References | Pin layout | Number of contacts | Insulating material | Contact \varnothing [mm] | Wire size | Test Voltage [kV] in mated position | | | | Max. admissible current ¹⁾ [A] at 10°C temperature rise |  Contact block insulator | Stamped contact | |
|------------|---|--------------------|---------------------|----------------------------|----------------|-------------------------------------|--------------------|----------------------------|--------------------|--|--|--|---------------|
| | | | | | | AC rms | | DC | | |  Part number |  Part number | |
| | | | | | | Contact to receptacle body | Contact to contact | Contact to receptacle body | Contact to contact | | | Reel size (pcs.) | |
| | | | | | | | | | | | | 1'000 | 10'000 |
| A 065 |  | 6 | PBT | 0.9 | AWG20 to AWG24 | 1.7 | 2.0 | 2.4 | 2.6 | - | E21 504 A065-S | | |
| A 066 |  | 8 | PBT | 0.9 | AWG20 to AWG24 | 1.5 | 1.6 | 2.2 | 2.7 | 3.0 | E21 504 A066-S | RMS1/0.9:1K | RMS10/0.9:10K |
| A 056 |  | 11 | PBT | 0.9 | AWG20 to AWG24 | 1.4 | 1.5 | 2.1 | 2.2 | - | E21 504 A056-S | | |
| A 086 |  | 16 | PBT | 0.7 | AWG26 to AWG30 | 0.8 | 1.5 | 1.3 | 2.1 | 1.7 | E21 504 A086-S | | |
| A 092 |  | 19 | PBT | 0.7 | AWG26 to AWG30 | 0.8 | 1.2 | 1.2 | 1.8 | - | E21 504 A092-S | RMS1/0.7:1K | RMS10/0.7:10K |

¹⁾ Current per contact at 10°C temperature rise measured on the basic curve according to IEC 60512-5-2-5b. For the max. operating current a reduction factor must be used and limitations due to the size of the wires and the permissible upper temperature limit of the materials employed must be taken into account. See page A-12 for details.

PRE-CABLED SOLUTION

| References | Pin layout | Number of contacts | Insulating material | Contact \varnothing [mm] | Wire size | Test Voltage [kV] in mated position | | | | Max. admissible current ²⁾ [A] at 10°C temperature rise | Turnkey solution part number |
|---------------------|---|--------------------|---------------------|----------------------------|-----------|-------------------------------------|--------------------|----------------------------|--------------------|--|--|
| | | | | | | AC rms | | DC | | | |
| | | | | | | Contact to receptacle body | Contact to contact | Contact to receptacle body | Contact to contact | | |
| A 066 ¹⁾ |  | 8 | ABS | 0.9 | AWG24 | 1.5 | 1.5 | 2.5 | 2.5 | 1.9 | CA_S_8XLV_SI504 1.0m CA_S_8XLV_SI504 2.0m CA_S_8XLV_SI504 5.0m |

¹⁾The Fischer Core Series Disposable turnkey solution is available in a standard 8-contact pin layout. Pin layout with 16 contacts is available on request.

²⁾ Current per contact at 10°C temperature rise measured on the basic curve according to IEC 60512-5-2-5b. For the max. operating current a reduction factor must be used and limitations due to the size of the wires and the permissible upper temperature limit of the materials employed must be taken into account. See page A-12 for details.

SINGLE OR TWO-PIECE SHELL

MECHANICAL & ENVIRONMENTAL DATA

| | |
|--|--|
| Sealing rating – Single shell – Two-piece shell | IP30 IP40 |
| Operating temperature range | -20°C to +65°C |
| Endurance | 10 mating cycles |
| Gamma irradiation for sterilization | Tested to withstand irradiation up to 60 kGy per ISO 11137-2 |
| EtO for sterilization | Tested with a standard EtO sterilization cycle per ISO 11135 |
| Mating / Unmating force | Typ. 10-20 N |

MATERIAL & SURFACE TREATMENTS

| Parts | Material | Surface treatment | Flammability |
|-------------------------|-----------------|-------------------|--------------|
| Plastic housing | ABS | – | UL 94 HB |
| Soft-touch areas | TPE | – | UL 94 HB |
| Contacts | Brass or Bronze | Gold over Nickel | – |
| Insulator | PBT | – | UL 94 V-0 |
| Ferrule | Copper alloy | Nickel | – |