



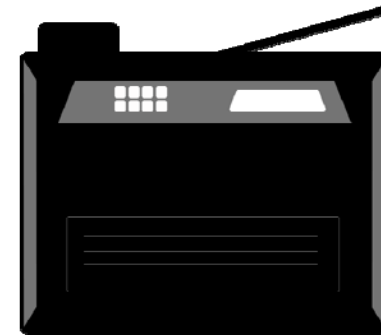
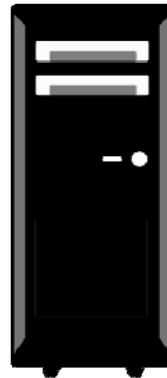
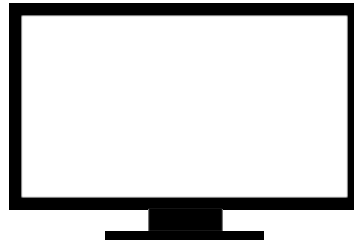
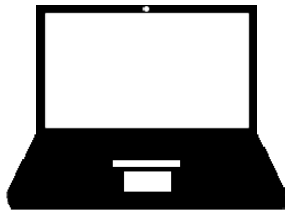
MM80 Series

DDR3 SDRAM SODIMM Connector

Connector Training Module

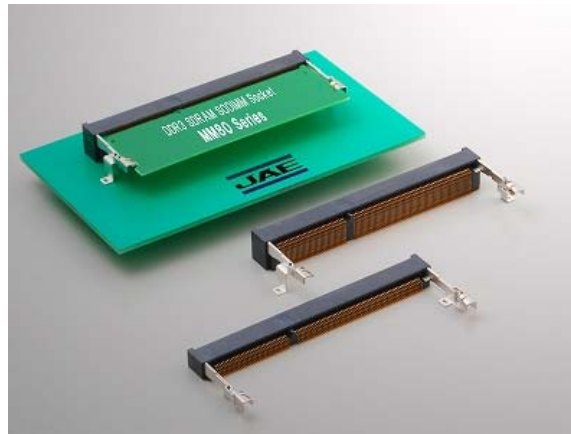
Application Examples

- Laptop
- Desktop computer
- Server
- FAX Machine
- Copier
- Etc



MM80 Series Overview

The MM80 series is a 204-position DDR3 SDRAM SODIMM* socket which is compatible with the JEDEC MO-268C standard. It is a right angle SMT connector with high contact force. It prevents incomplete mating structure by remaining unlocked until the DIMM board is completely inserted. Secure positioning of the DIMM board increases contact stability.

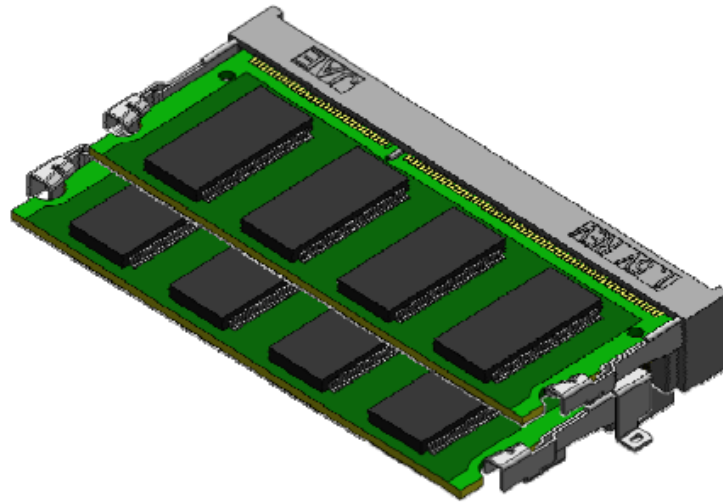


*Note: DDR3: Double Data Rate 3
SDRAM: Synchronous Dynamic Random Access Memory
SODIMM: Small Outline Dual In-line Memory Module

MM80 Series Overview

Compact Waterproof Circular Connector

- 204-position DDR3 SDRAM SODIMM socket
- Compatible with the JEDEC MO-268C standard
- Key to secure mating is compatible with operation voltage 1.5V. (DDR3)
- Right-angle SMT and reverse mount types available in two connector heights: 5.2mm and 9.2mm

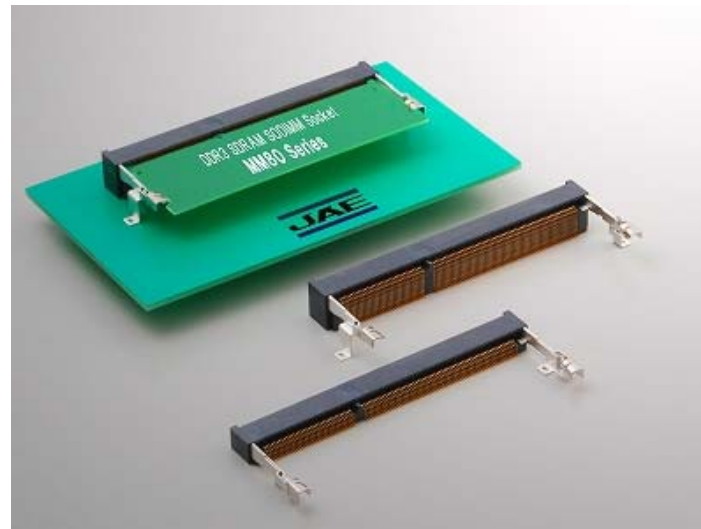


General Specifications

Number of Positions	204
Pitch	0.6mm
Contact resistance	40m Ω max
Insulation Resistance	100m Ω min
Dielectric Withstanding Voltage	AC 500Vr.m.s (for 1 minute)
Operating Temperature Range	-55 to +105°C
Current Rating	0.3A per pin
Mating Durability	25 cycles
Applicable DIMM Board Thickness	1.0 \pm 0.1mm

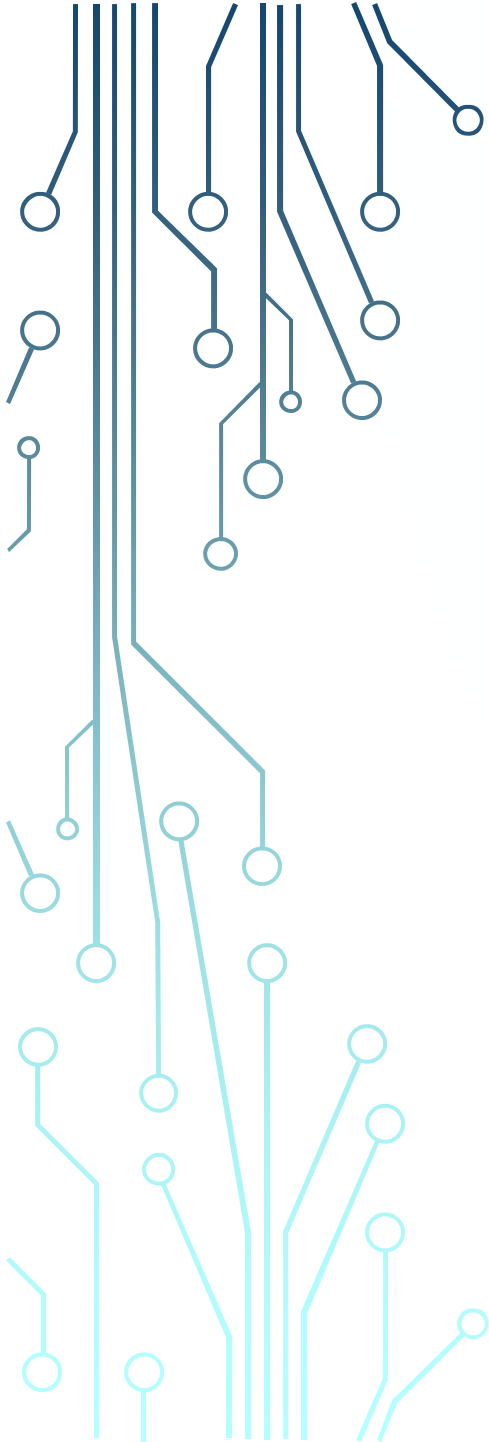
Materials and Finishes

Component	Material / Finish
Metal Latch	Stainless / Sn plating
Insulator	Glass filled LCP
Contact	Contact area: Phosphor bronze / 0.1 μ m min. Au plating over Ni Terminal area: Phosphor bronze / Au flash plating over Ni



Summary

- 204-position DDR3 SDRAM SODIMM socket
- Key included to secure mating
- Right-angle SMT and reverse mount types available in two connector heights 5.2mm and 9.2mm
- Current rating is 0.3A per pin



Technology to Inspire Innovation

JAE